

## The STARLIMS Public Health Informatics Platform

### Monitor and Protect the Health of the Population

Public health officials depend on their labs' abilities to not only monitor and track possible pandemics and epidemics, but to also determine causative effects whenever they occur. To do so, public health laboratories need the most secure, comprehensive, and compliant systems possible to keep agencies ahead of health risks and protect populations around the globe.

STARLIMS' Public Health Informatics Platform empowers laboratories to deliver timely and accurate results by improving data accuracy and integrity, boosting productivity, streamlining sample management, automating workflows, and enabling compliance.

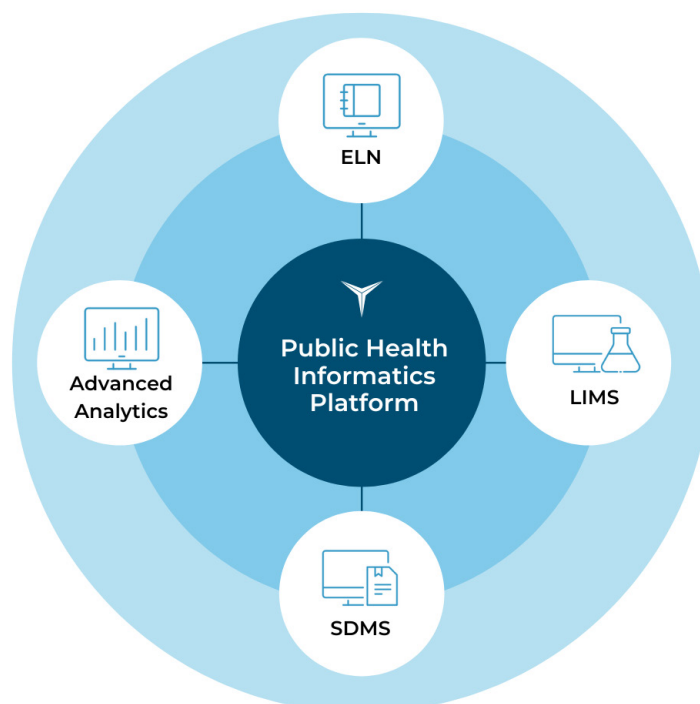
### Why Choose STARLIMS

STARLIMS is the public health LIMS of choice. With nearly four decades of experience, STARLIMS can help you meet industry standard best practices and guidelines. As a GSA Schedule 70 Certified provider, we partner with APHL, the CDC, and public health facilities in 30+ district, regional, national, and international public health labs to help you simplify compliance and achieve industry standards, such as HL7, PHL, ETOR, ICD10, CPT, LOINC, and SNOMED messages and codes.

### A Comprehensive Informatics Solution for Public Health

The STARLIMS Public Health Informatics Platform helps streamline day-to-day laboratory logistics by seamlessly collecting, processing, tracking, and delivering insights from specimens throughout their entire lifecycle.

By combining the Life Sciences for Public Health Laboratory Information Management System (LPH LIMS), with our R&D Electronic Laboratory Notebook (ELN), Scientific Data Management System (SDMS), and Advanced Analytics solutions, STARLIMS delivers a robust informatics platform designed to help organizations uphold the health and safety of the public.



## The Labstep ELN: Simplify Experiment Execution & Accelerate Innovation

R&D can be a complex process that comes with risk, time constraints, and intellectual property (IP) concerns. The Labstep Electronic Laboratory Notebook (ELN) is a modern, cloud R&D platform that helps keep lab data structured, clean, and traceable in one secure environment, so you can better execute and replicate experiments, simplify compliance, and protect IP.

The Labstep ELN uses interactive step-by-step protocols as templates for data collection to capture and structure all your research data and metadata in real-time. When combined with the full-featured Inventory module, you can keep track of samples, reagents, chemicals, and other stocks in one place, with the ability to seamlessly link them to your experiments and data.

Eliminate data transfer and deliver a single source of truth across all key R&D lab functions by connecting protocols, inventory, order management, instruments & devices, and automation in our scalable platform. As an easy-to-use, intuitive web app, Labstep enables global teams to collaborate anywhere, anytime, and on any device, so you can do more science with less grind.

## The LPH LIMS: Streamline & Standardize Laboratory Operations

The STARLIMS Life Sciences for Public Health (LPH) LIMS helps labs streamline operations, so you can deliver the accurate results that keep our communities ahead of health risks.

With LPH, you can automate processes, improve data management, and seamlessly collect and handle samples throughout the entire specimen lifecycle. Accurately manage results reporting for single samples moving through multiple laboratories and workflows. Support sample and test workflows by easily configuring triggers, sample points, resample, and retest workflows. Use barcoding and handheld devices to generate labels and make specimen tracking easier from mobile devices.

Deliver full traceability and accountability with comprehensive sample tracking, from receipt to disposal, as well as automate and generate customized reports to help simplify compliance. The LPH LIMS also makes it easy to guide users through the pre-defined steps that help lab teams comply with Standard Operating Procedures (SOPs), while providing appropriate recommendations based on your specifications.

## Genealogy

HOME > INVENTORY MANAGEMENT > BIOREPOSITORY

SEARCH ADD DELETE PRINT EDIT METADATA SAVE CART LOAD CART

SAMPLES CONTAINERS

Search:

GO

Inventory Id	Status	Matcode	SPREC	Container	Accession #	External Id	Expiry Date	Location	Owner	Custodian	Consent Type	Consent Comment	Amount Left	Container ID	Material Typ
A210072641	Released	Plated Materi...		N/A	A00002806			BENCHTOP-AMB...		BILLY			0	A210072630	Tested Here

TRANSACTIONS

Add Comment  
Adjustment (Qty)  
Assign Consent  
Assign Project  
Assign Usage  
Assign Tests  
Batch Aliquot  
Change Custodian  
Change Owner  
Change Status  
Consume  
Dispose  
Increase Thaw Count

GENERAL STORAGE GENEALOGY ATTACHMENTS TEST RESULTS CHAIN OF CUSTODY PATIENT SPREC

Inventory Id	Status	Matcode	Container	Amount	Transaction Type	Transaction Date	Location
Root							
A210072617	Released	Extracted Material	Red Top Tube	0 ml	QuickCreateInventory	Tue Jun 29 2021 11:36:05 GMT-0400	BENCHTOP-AMBIEN > Rack 2
A210072629	Released	Plated Material	N/A		Aliquoted	Tue Jun 29 2021 11:37:44 GMT-0400	BENCHTOP-AMBIEN > Rack 2
A210072641	Released	Plated Material	N/A		Aliquoted	Tue Jun 29 2021 11:46:48 GMT-0400	BENCHTOP-AMBIEN > Rack 2
A210073117	Released	Extracted Material	N/A		Aliquoted	Thu Oct 21 2021 08:57:04 GMT-0400	BENCHTOP-AMBIEN > Rack 2

Pool Details

LOAD CONSUMED INVENTORIES

Inventory...	External Id	Matc...	Status	Amount L...
--------------	-------------	---------	--------	-------------

## **SDMS: Simplify Testing Equipment Integration & Easily Manage Laboratory Documentation**

The amount of data, data types, and data sources are growing exponentially, making it hard for laboratories to manage without putting themselves at risk for errors. The STARLIMS Scientific Data Management System (SDMS) streamlines laboratory management with a central repository for all lab data and documents. Capture, parse, store, and organize scientific documentation in one place to eliminate data silos and collaborate globally. With automated data capture and extraction, you can quickly extract, record, and trace valuable scientific information from any lab instrument generating PDF files. SDMS also easily integrates lab instruments and systems with the LPH LIMS, reducing the risk of manual errors and improving lab efficiencies.

## **Advanced Analytics 2.0: Make Critical Decisions Faster, with Better Data**

With information pouring into the lab from all directions, being able to draw insights from that data can help you identify the trends and patterns that enable effective public health action. STARLIMS Advanced Analytics 2.0 helps you make critical decisions faster, with better data. Advanced Analytics 2.0 is a Software-as-a-Service (SaaS), cloud-based analytics solution that enables deeper data analysis with user-friendly, responsive, and configurable dashboards. With features like dynamic reporting, advanced statistical analysis, and data visualization tools, organizations can improve laboratory efficiencies by optimizing processes, and identifying the trends, patterns, and bottlenecks that can support long-term health outcomes.

## **Infrastructure: Choose the Right Model For Your Business**

Overseeing laboratory operations is hard enough without the added worry of having the right IT infrastructure. With on-premises (on-prem), cloud hosting, and cloud subscription models, STARLIMS offers flexible options to fit the needs of your organization.

To help customers lower costs, speed deployment, and increase scalability, STARLIMS has partnered with industry-leading provider Amazon Web Services (AWS) to offer private cloud hosting for both our managed hosting services and subscription models. Launch quickly without unplanned infrastructure costs by letting us do the heavy lifting for you. And with the ability to scale as you go, start with what you need and add more licenses over time.

Some industries and organizations are more complex, and moving to the cloud isn't the right solution. STARLIMS also offers on-prem installation and support, so you can manage your infrastructure the way you want to.

Visit us at: [www.starlims.com](https://www.starlims.com)

